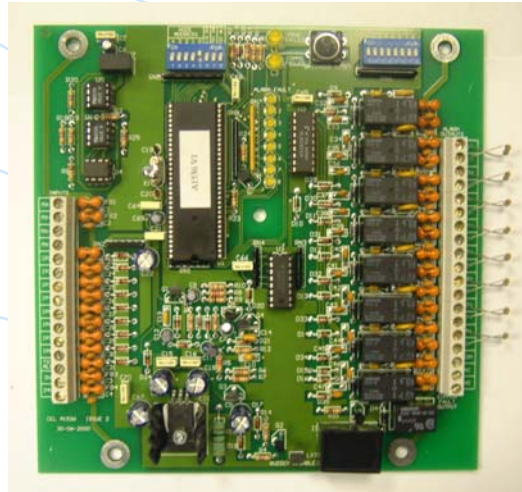


A1536 8 Way Alarm Board

For CEL Apollo Protocol Analogue Addressable Control Panels



Key Features

- ◆ Ideal for use with all Control Equipment's Apollo protocol analogue addressable control panels
- ◆ The highest quality of design, componentry and manufacture for outstanding durability
- ◆ 8 programmable inputs 0v switched
- ◆ 8 programmable alarm outputs rated at 1 Amp
- ◆ RS485 communications protocol
- ◆ Up to 31 can be connected to each panel

From the UK's leading control panel manufacturer



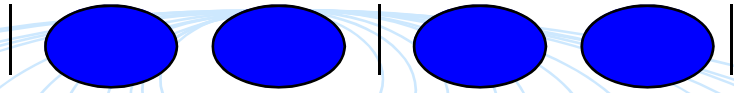
Assessed to ISO 9001: 2000
Certificate number 018



British Fire Protection Systems Association



INVESTOR IN PEOPLE



Introduction

The Control Equipment range of expansion boards consists of three varieties. The A1535 8 way input/output board, the A1535 8 way relay board and the A1536 8 way alarm board.

The A1536 8 way alarm board provides 8 fully programmable alarm circuits, all rated at 1A. When programming, the engineer can set up each circuit to give either a pulsed or a continuous tone. Additionally on the A1536 there are 8 open collector inputs, which are 0v switched. These inputs are non-monitored and can be set up as fire input or indication-only inputs. The fire inputs are latching inputs whereas the inputs for indication only are non-latching. All these inputs can be used in the panel's cause/effect programming.

Technical Specifications

Addressing:	1 to 31 using DIL switches
Input Voltage:	24V DC
Quiescent Current:	100mA
Alarm Mode Current:	100mA + 25mA per active alarm circuit + alarm current (when operational)
Maximum Supply Current:	9A
Alarm Circuit Current:	8 x fully loaded alarm circuits, each at 1A
Communications Protocol:	RS 485

Part Numbers

2500/158

A1536 8 Way alarm board

From the UK's leading control panel manufacturer

Control Equipment Ltd, Hillcrest Business Park, Cinderbank, Dudley, West Midlands, DY2 9AP, United Kingdom

Phone: +44 (0)1384 458651 Fax: +44 (0)1384 458972
Email: celsales@controlequipment.co.uk Website: www.controlequipment.com

A1536SL/rev1/03.04